

2023 Collection



THE TILE MANUFACTURER

300x600 MM
Porcelain Tiles

ABOUT US

ClayArk: An Ark with an edge. Where boundless imagination meets porcelain magic. Unleashing creativity, transcending mere tiles, we craft a symphony of art and skill.

With a foundation dating back to 2002, we have emerged as one of India's foremost Tile Manufacturers and Stockists. Our influence extends further, as we have established a strong presence in the U.A.E.

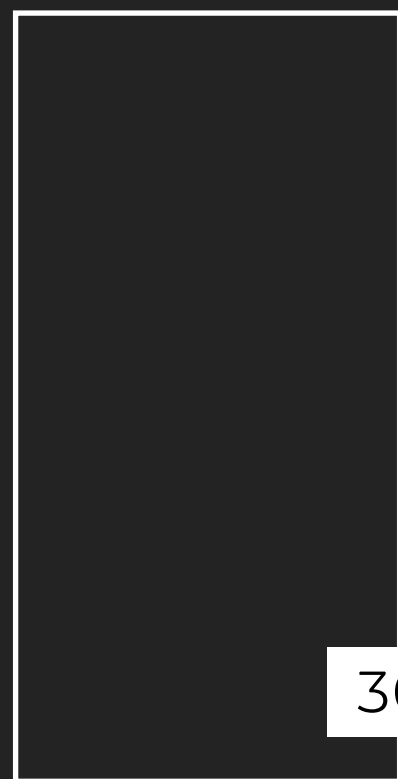
Our warehouse, covering an extensive area of 185,000 square feet, serves as a home to a substantial inventory of 900,000 square meters of tiles. We specialise in a wide range of products, including porcelain tiles, kitchen tops, and large-sized slabs, ensuring versatility in sizes and thicknesses to cater to diverse customer preferences.

Elevate your home, office, indoors, or outdoors with tiles that seamlessly blend into any space, becoming a symbol of timeless beauty.

Tiles that effortlessly edge into every space they touch.



MATT SERIES



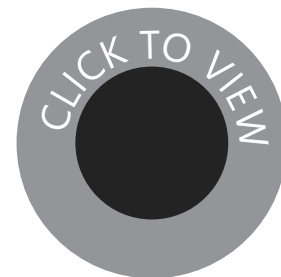
300x600MM



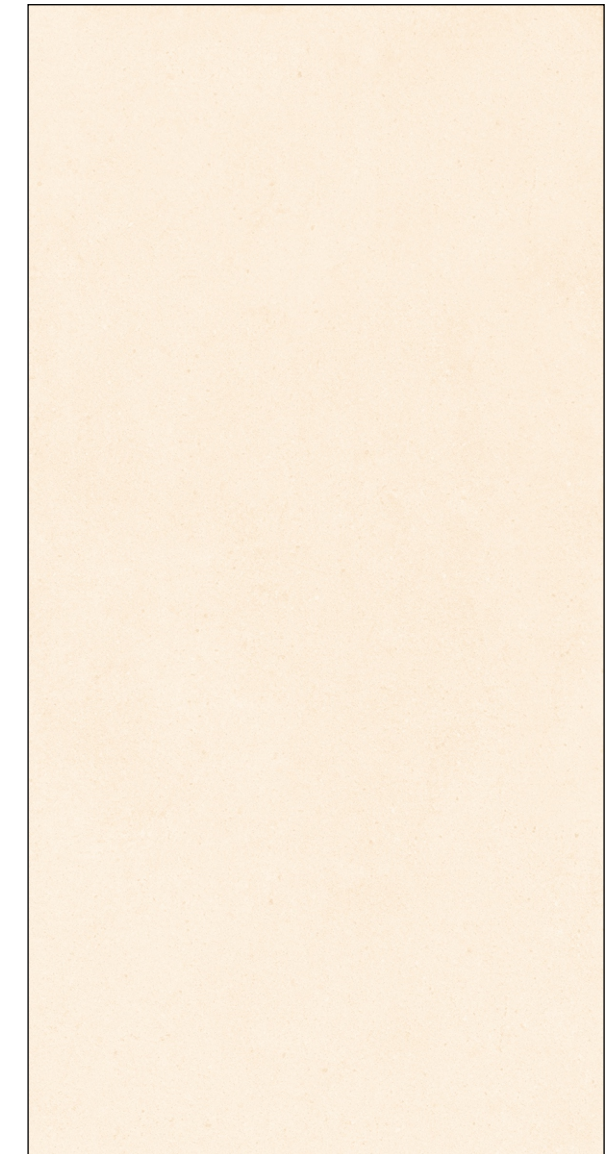


MASSA BIANCO

SURFACE MATT



300x600 MM
Porcelain Tiles

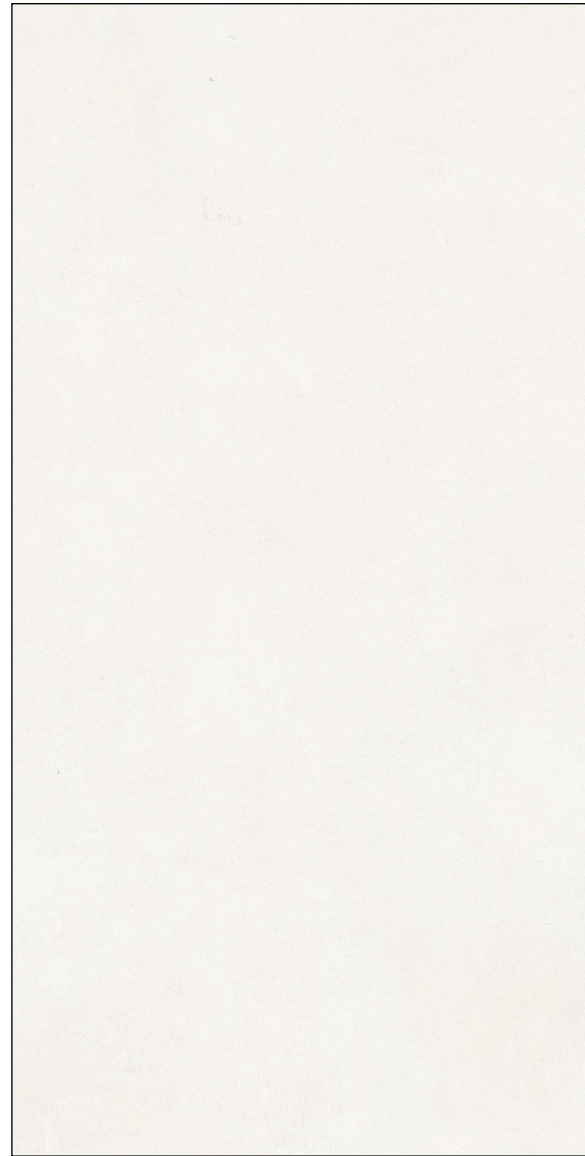


MASSA CREMA

300x600 MM
Porcelain Tiles

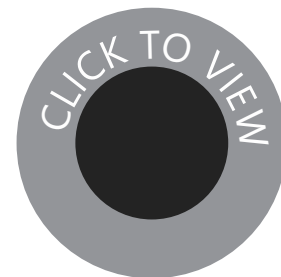


SURFACE MATT



NORWAY BIANCO

SURFACE MATT

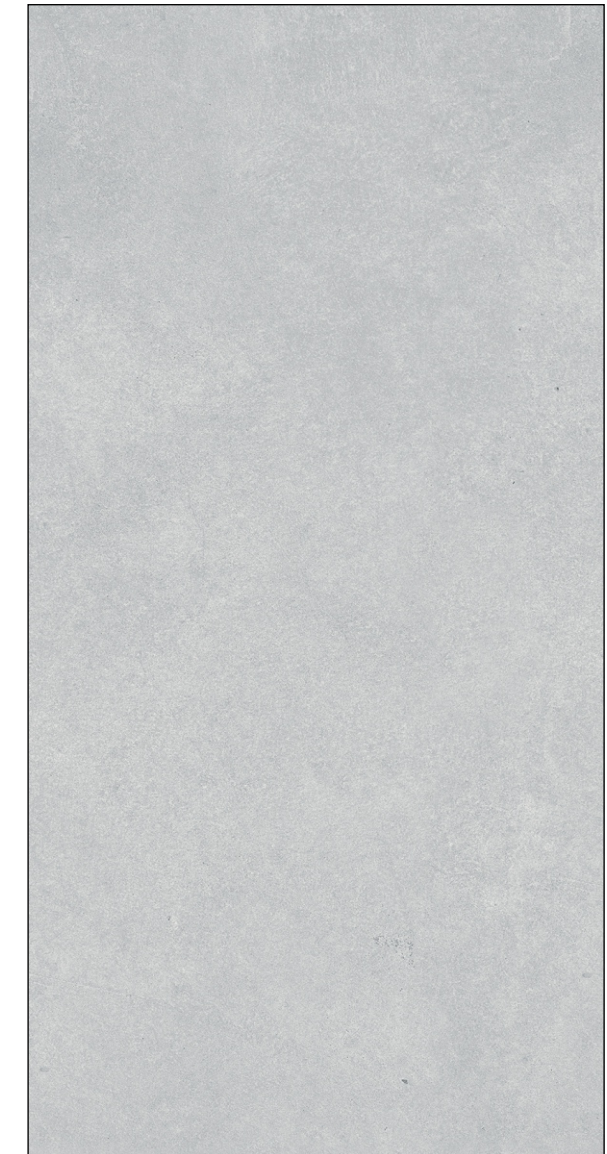


300x600 MM
Porcelain Tiles



300x600 MM
Porcelain Tiles


ClayArk
THE TILE MANUFACTURER



NORWAY GREY



SURFACE MATT



NORWAY IVORY

SURFACE MATT



300x600 MM
Porcelain Tiles



OCEANA

300x600 MM
Porcelain Tiles



SURFACE MATT



TERRAZO IVORY

SURFACE MATT



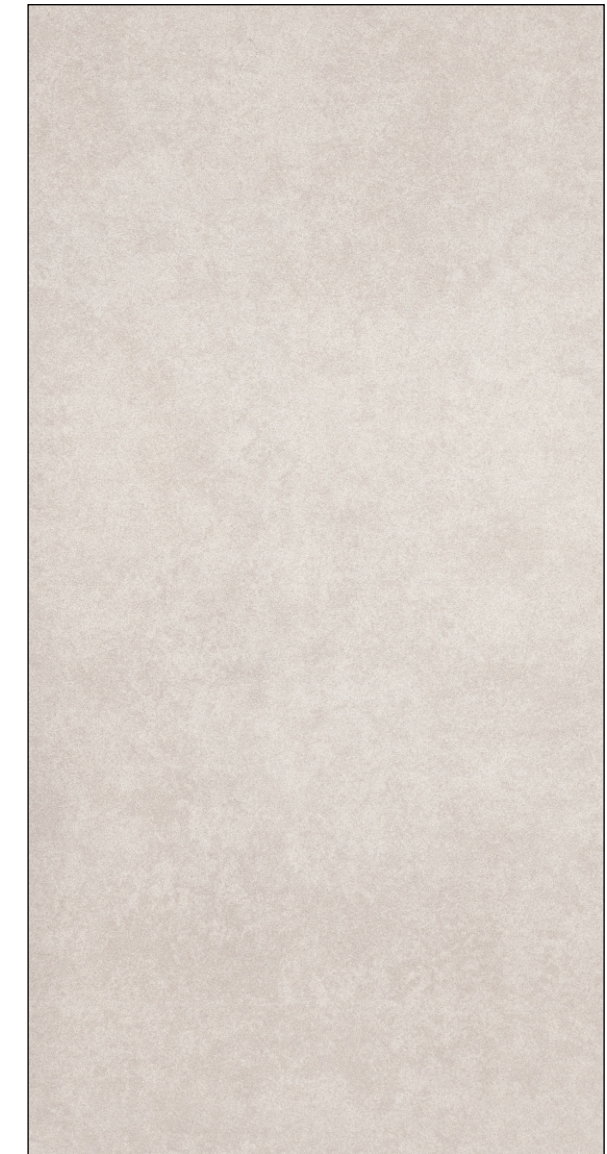
300x600 MM
Porcelain Tiles



300x600 MM
Porcelain Tiles


ClayArk

THE TILE MANUFACTURER



ETNA BIANCO

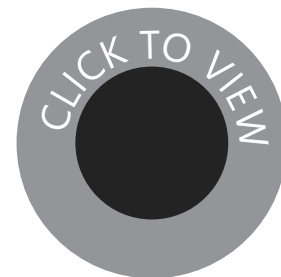


SURFACE MATT



MASSA ANTHRACITE

SURFACE MATT



300x600 MM
Porcelain Tiles

TECHNICAL SPECIFICATION

CHARACTERISTIC	STANDARD AS PER ISO-13006/EN14411 GROUP Bla	MEAN VALUE PGVT / GVT	TEST METHOD
REGULATORY PROPERTIES			
Deviation in length & width	±0.5 %	±0.1 %	ISO-10545-2
Deviation in thickness	±5.0 %	±4.0 %	ISO-10545-2
Straightness in side	±0.5 %	±0.1 %	ISO-10545-2
Rectangularity	±0.5 %	±0.1 %	ISO-10545-2
Surface flatness	±0.5 %	±0.2 %	ISO-10545-2
Color difference	Unaltered	No change	ISO-10545-16
Glossiness	As per mfg	Min 90%	GLOSSOMETER
STRUCTURAL PROPERTIES			
Water absorption	< 0.50 %	< 0.05 %	ISO-10545-3
Apparent density	> 2.0 g/cc	> 2.10 g/cc	DIN 51082
MASSIVE MECHANICAL PROPERTIES			
Modulus of rupture	Min. 35 N/mm ²	Min. 40 N/mm ²	ISO-10545-4
Breaking strength	Min. 1300 N	Min. 2000 N	ISO-10545-4
Impact resistance	As per mfg.	Min. 0.55	ISO-10545-5
SURFACE MECHANICAL PROPERTIES			
Surface abrasion resistance	As per mfg	Min. Class-3	ISO-10545-7
MOH's hardness	As per mfg	Min. 4	EN 101
THERMO HYGROMETRIC PROPERTIES			
Frost resistance	No damage	No damage	ISO-10545-12
Thermal shock resistance	No damage	No damage	ISO-10545-9
Moisture expansion	Nil	Nil	ISO-10545-10
Thermal expansion (COE)	Max. 9.0 x 10 ⁻⁶	Max. 6.5 x 10 ⁻⁶	ISO-10545-8
Crazing resistance	As per mfg	Min. 10 Cycle	ISO-10545-11
CHEMICAL PROPERTIES			
Chemical resistance	No damage	No damage	ISO-10545-13
Stain resistance	Resistant	Resistant	SO-10545-14
SAFETY PROPERTIES			
Slip resistance	As per mfg	> 0.40	ISO-10545-17
Fire resistance	As per mfg	Fireproof	N. A.
Lead & Cadmium given off by glazed tiles	As per mfg	Does not yield Pb & Cd	ISO-10545-15

PACKING DETAILS

SIZE	THICKNESS	TILES PER BOX	COVERAGE AREA (Approx)
300X600MM	8.2 mm (Approx)	5 Pcs.	0.90 Sq. Mtr.

Note: Colour Shown are as accurate as the limitations of the printing process will allow. Prospective customers are advised to inspect a sample of the tile before ordering. Every effort has been made to ensure the accuracy of the information given. However, the company reserve the right to change the specifications without prior notice. Sometime variations in shade or size being inherent to ceramic industry may occur. Before fixing, we advise you to follow the fixing instructions on the cartons of the tiles as no responsibility can be accepted by the company once the tiles have been fixed.



ClayArk
THE TILE MANUFACTURER

