

2023 Collection



600x600 MM

FULL BODY
PORCELAIN TILES

16mm
Thickness

ABOUT US

ClayArk: An Ark with an edge. Where boundless imagination meets porcelain magic. Unleashing creativity, transcending mere tiles, we craft a symphony of art and skill.

With a foundation dating back to 2002, we have emerged as one of India's foremost Tile Manufacturers and Stockists. Our influence extends further, as we have established a strong presence in the U.A.E.

Our warehouse, covering an extensive area of 185,000 square feet, serves as a home to a substantial inventory of 900,000 square meters of tiles. We specialise in a wide range of products, including porcelain tiles, kitchen tops, and large-sized slabs, ensuring versatility in sizes and thicknesses to cater to diverse customer preferences.

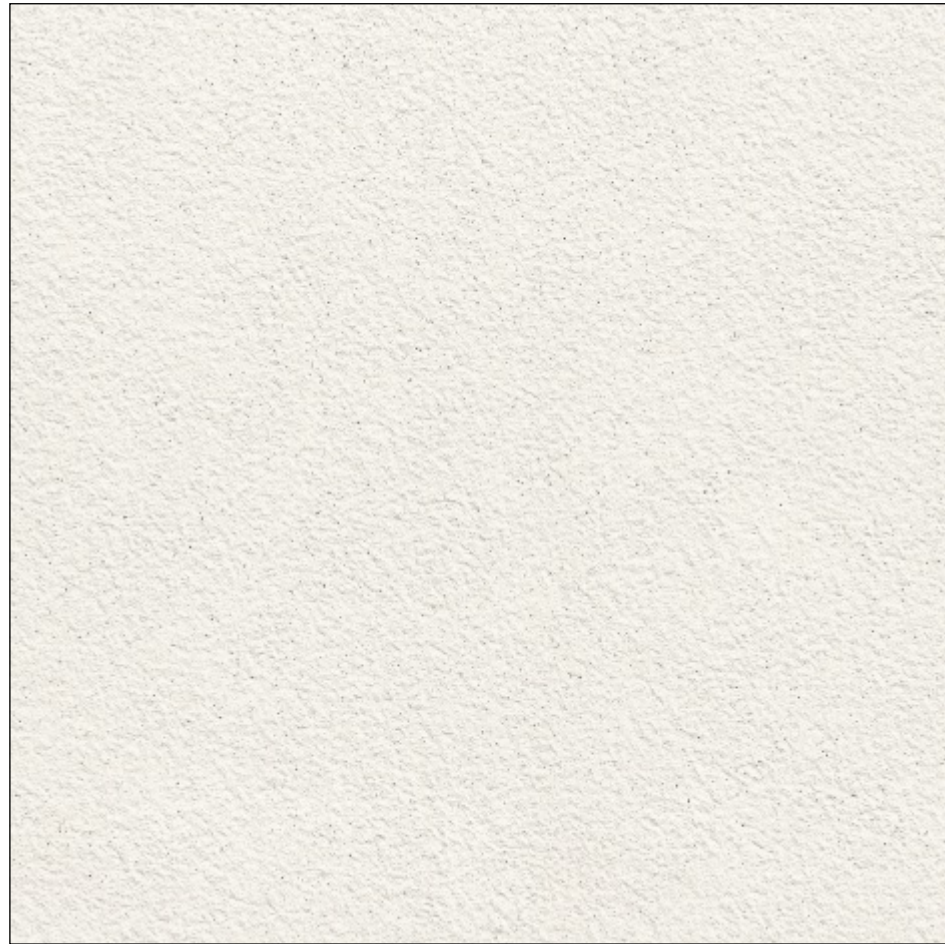
Elevate your home, office, indoors, or outdoors with tiles that seamlessly blend into any space, becoming a symbol of timeless beauty.

Tiles that effortlessly edge into every space they touch.



MATT SERIES





ARTSTONE IVORY

SURFACE MATT



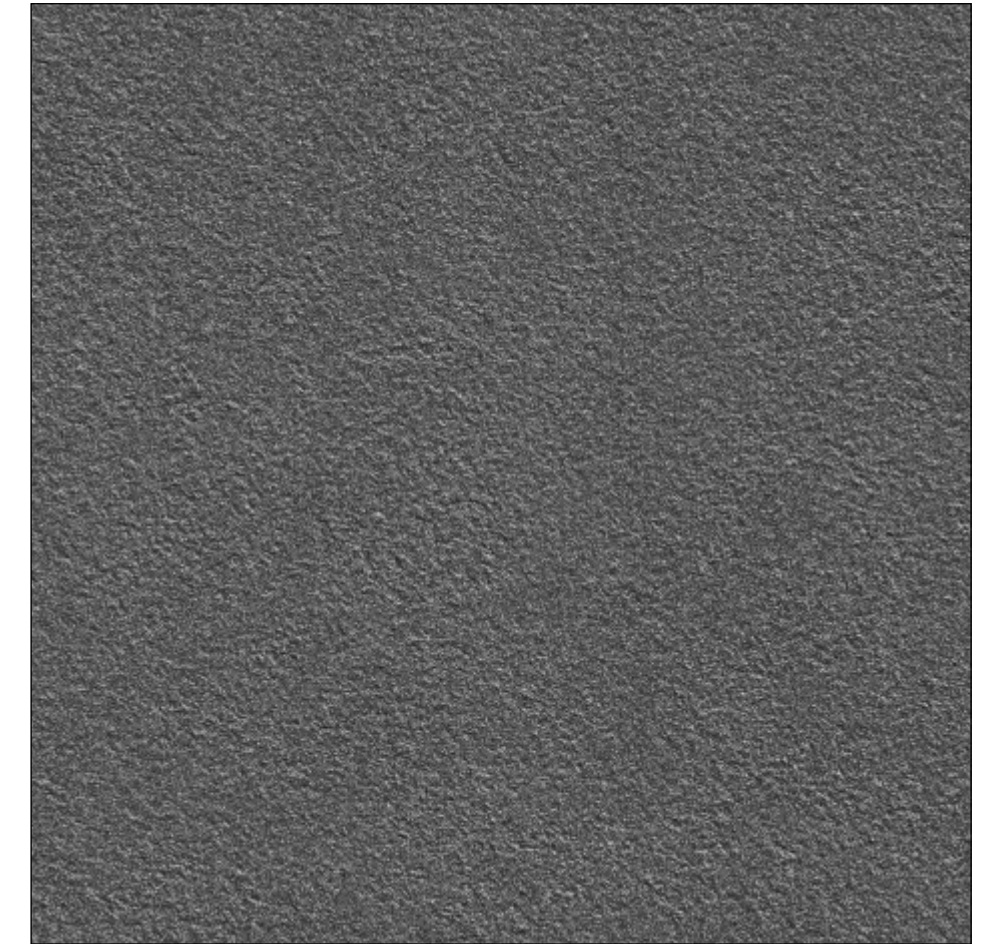
16 mm
Thickness



600x600 MM
FULL BODY
PORCELAIN TILES




ClayArk



ARTSTONE NERO

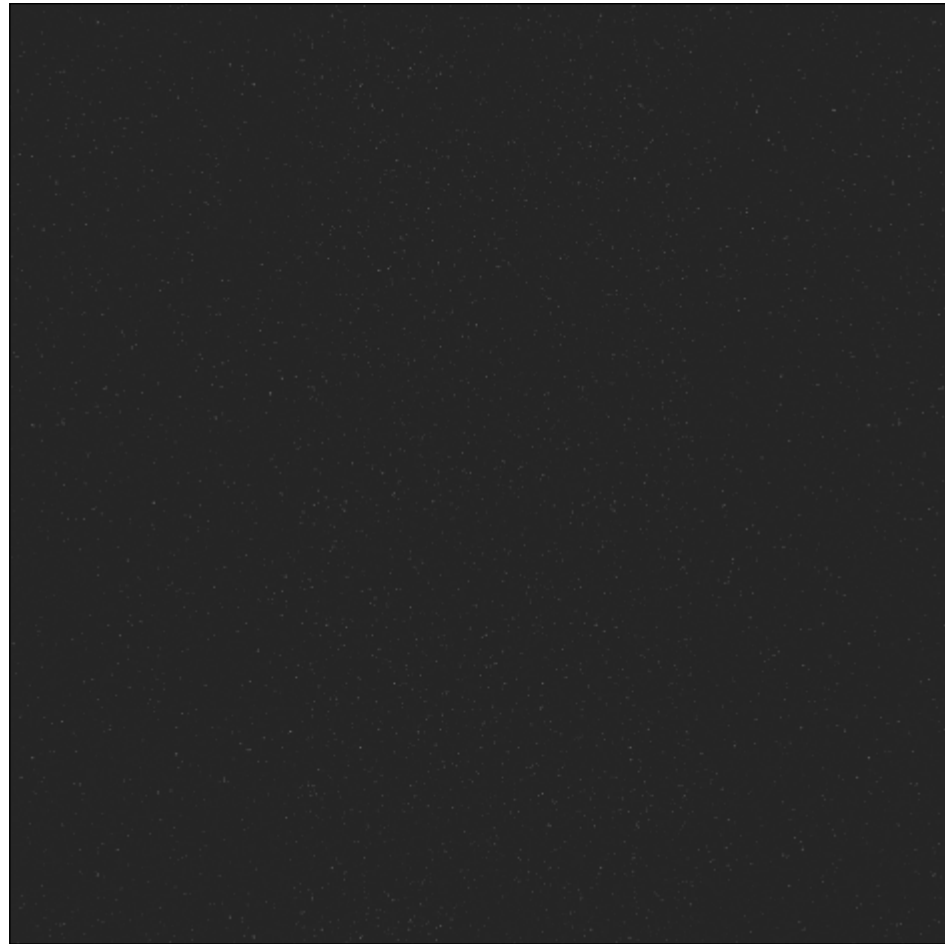
SURFACE MATT

600x600 MM

**FULL BODY
PORCELAIN TILES**

16 mm
Thickness





ROCK BLACK

SURFACE MATT



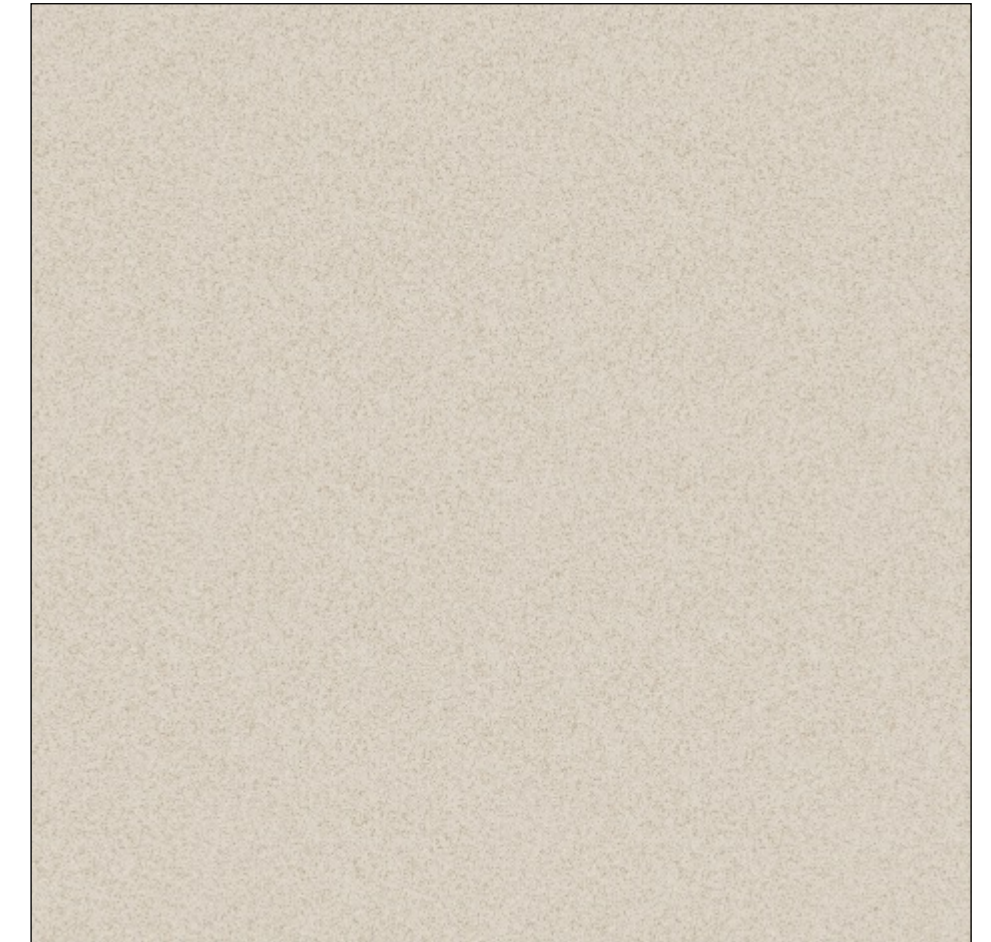
16mm
Thickness



600x600 MM
FULL BODY
PORCELAIN TILES




ClayArk



ROCK CREAMA

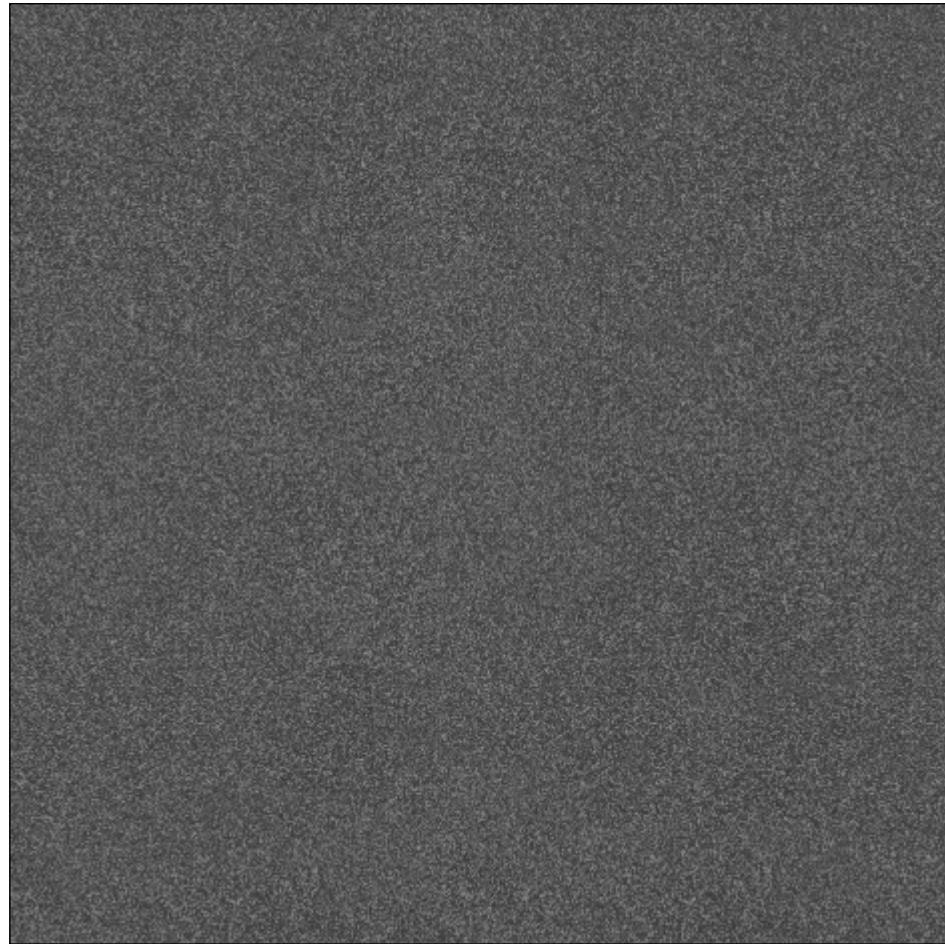
SURFACE MATT

600x600 MM

**FULL BODY
PORCELAIN TILES**

16 mm
Thickness





ROCK GREY

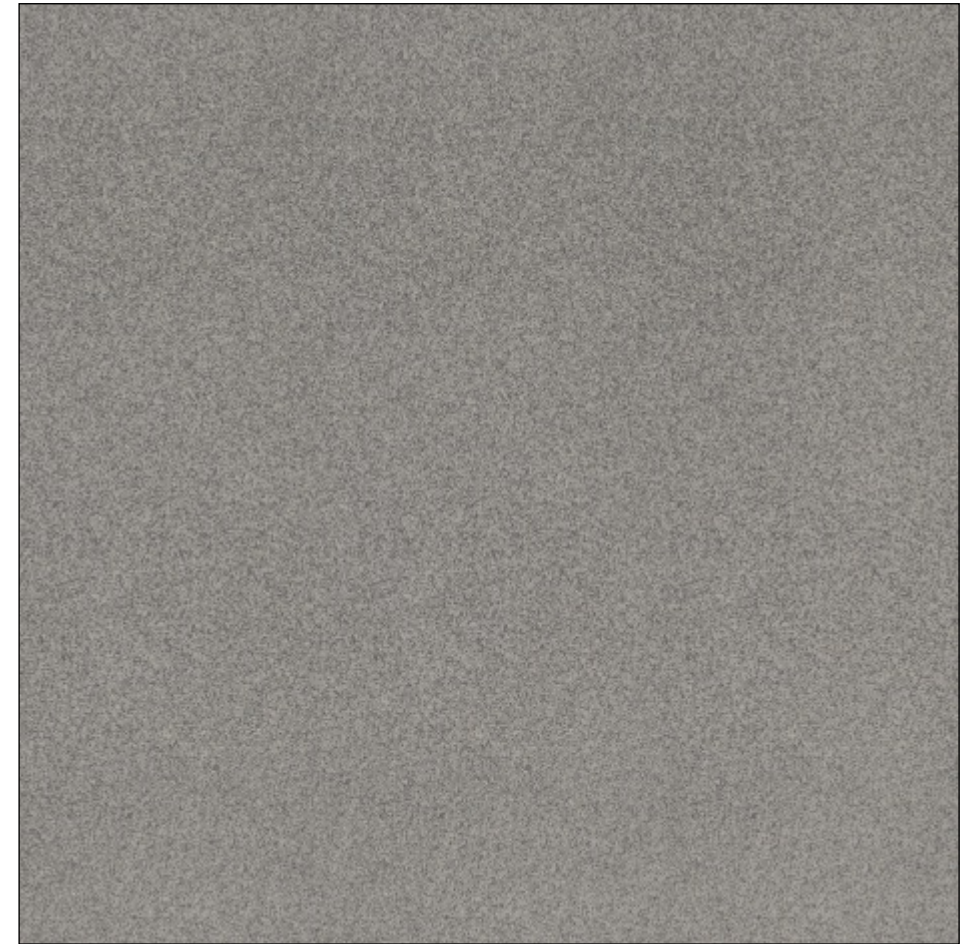
SURFACE MATT



16mm
Thickness



600x600 MM
FULL BODY
PORCELAIN TILES



ROCK SILVER

SURFACE MATT

600x600 MM
FULL BODY
PORCELAIN TILES

16 mm
Thickness





ROCK WHITE

SURFACE MATT



16 mm
Thickness



600x600 MM
FULL BODY
PORCELAIN TILES

Technical Specification

Sr. No.	CHARACTERISTICS	STANDARD AS PER ISO-13006 / EN14411 GROUP BIA	VALUE OF WIN-TEL	TEST METHOD
REGULATORY PROPERTIES				
01	Deviation in length & width	± 0.50%	± 0.20%	ISO-10545-2
02	Deviation in thickness	± 5.00%	± 4.00%	ISO-10545-2
03	Straightness of sides	± 0.50%	± 0.10%	ISO-10545-2
04	Rectangularity	± 0.50%	± 0.20%	ISO-10545-2
05	Surface flatness	± 0.50%	± 0.20%	ISO-10545-2
06	Colour difference	Unaltered	No Change	ISO-10545-16
STRUCTURAL PROPERTIES				
01	Water Absorption	< 0.50%	< 0.50 %	ISO-10545-3
02	Apparent density	> 2.00 g/cc	> 2.28 g/cc	DIN 51082
MASSIVE MECHANICAL PROPERTIES				
01	Modulus or rupture	Min. 35 N/mm ²	Min. 45 N/mm ²	ISO-10545-4
02	Breaking strength	Min. 1300 N	Min. 2000 N	ISO-10545-4
03	Impact resistance	As per mfg.	Min. 0.55	ISO-10545-5
SURFACE MECHANICAL PROPERTIES				
01	Deep abrasion resistance	Max. 175mm ³	Max. 132mm ³	ISO-10545-6
02	Moh's hardness	Min. 6	7	EN 101
03	Surface Abrasion Resistance	As per mfg.	N. A.	ISO-10545-7
THERMOHYDROMETRIC PROPERTIES				
01	Frost resistance	No Damage	Frost proof	ISO-10545-12
02	Thermal shock resistance	No Damage	No Damage	ISO-10545-9
03	Moisture expansion	Nil	Nil	ISO-10545-10
04	Thermal Expansion(COE)	Max. 9.0x10 ⁻⁶	Max. 6.5x10 ⁻⁶	ISO-10545-8
04	Crazing Resistance	As Per Mfg.	N.A.	ISO-10545-11
CHEMICAL PROPERTIES				
01	Chemical resistance	No Damage	No Damage	ISO-10545-13
02	Satin resistance	Resistance	Resistance	ISO-10545-14
SAFETY PROPERTIES				
01	Slip resistance (friction co efficient)	> 0.40	> 0.40	ISO-10545-17



PACKING DETAILS

SIZE	PCS./BOX	WEIGHT / BOX			AREA / BOX
		POLISHED	SATIN	RUSTIC	
600x600mm	4 Pcs.	29 Kg.	29 Kg.	29 Kg.	1.44 Sq. Mtr.

